

BCCD
BRADFORD COUNTY CONSERVATION DISTRICT

Lead, Educate, Empower

Partnering for PA's Dirt & Gravel Road Program

Presented by:
Joe Guastini
Bradford County Conservation District
Technical Team Leader




Program Overview

What is the PA Dirt, Gravel, & Low Volume Roads Program?

- Program which provides local road-owning entities with grant funding for road and environmental improvements on unpaved and low-volume paved roads
- Current program allocation is \$28 Million, with a minimum of \$8 Million earmarked for paved low volume roads


Program Overview

- Establish a connection between road maintenance & the environment
- Illustrate how good roads lead to a better environment for a better municipality
- Identify sources of erosion, sediment, & dust pollution associated with roads




Program Overview

It's Going from this...




...To this




Program Overview

Or this...



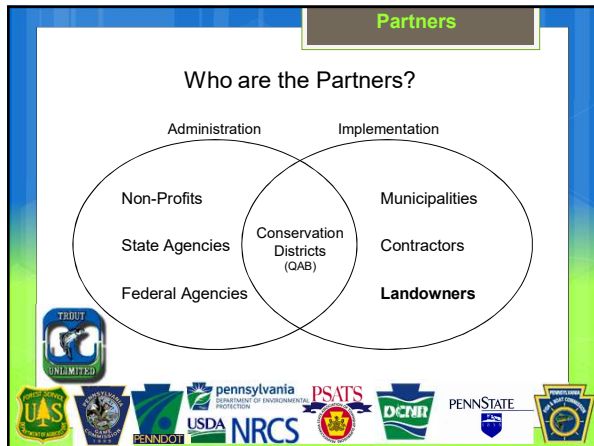
...To this



Program Overview

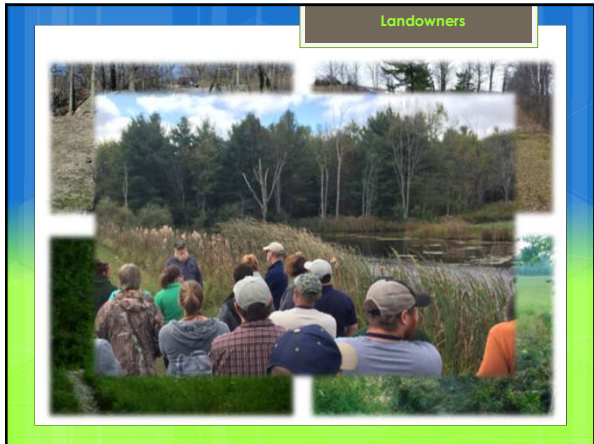
“Better Roads, Cleaner Streams”
Relationship Between: Land and Water

- **Municipal Goal** - **Better roads** and reduced maintenance through proper practices and procedures
- **Program Goal** - **Better environment** through proper practices and procedures
- **20+ Years has Proven** - Improved maintenance techniques will benefit both roads and the environment











Accomplishments

What Have These Partnerships Accomplished?

- Identified over **17,000** Pollution Sites Statewide
- **4,533** Completed Sites
- **2,390** Improved Road Miles
- Countless Sediment and Nutrient Reductions
- Development of New Partnerships
 - Arkansas, Maryland, New York?

Lead, Educate, Empower

For More Information

Address: Stoll Natural Resource Center
200 Lake Rd., Suite E
Towanda, PA 18848

Phone: 570-485-3138

Web: www.bccdpa.com
 www.dirtandgravel.psu.edu